

He Rauemi Tautoko Mā Ngā Kura Māori

Hei Ārahi i ngā Tikanga Aromatawai,
Tikanga Pūrongorongo hoki



Ngā Ihirangi

1	I takea mai a Aromatawai i a Ako Ko te hononga i waenganui i te Aromatawai me te Ako	1
2	Ko te aronga o Aromatawai ko te ākongā Ko te reo o te pūrongo	3
3	Ko te aronga o Aromatawai ko te āheinga me te māiatanga o te kaiako Kia whakamahi i ngā taunakitanga huhua	7
4	Ko te aronga o Aromatawai ko ngā āhuatanga me ngā pūmanawa tuku iho o te kaiako Ko te arotake me te pakirehua	12
5	He mea tūturu te Aromatawai Ko te whakatutuki i ngā wawata ā-motu me ngā wawata ā-hapori	14
6	Ko Aromatawai te māngai reo o te tamaiti, te whānau, te hapū me te hapori Ko te aromatawai me te whakamōhio atu i ngā wawata o te hapori	16
7	He mea whakaatu te Aromatawai i te pitomata me ngā pūmanawa o ngā ākongā Kei tua atu i te tohu mātauranga	20
8	He mea whakamōhio te Aromatawai i te whakamahere me ngā take tautāwhi Me whakatau ki runga i te mōhiotanga	23
	He mihi	30

Kua whakamahia ngā Tirohanga Aromatawai mai i a Rukuhia Rarangahia hei ārahi i ngā tikanga Aromatawai me ngā tikanga pūrongo mā ngā kura Māori.

1

I takea mai a Aromatawai i a Ako:

KO TE HONONGA I WAENGANUI I TE AROMATAWAI ME TE AKO

He kupu te ako e whakaahua ana i te pāhekohekotanga i waenganui i te kaiako me te ākonga, e whakaatu ana i te whakautetanga me te wairua whakatau. Ehara i te mea kei ngā kura, kei ngā taiao mātauranga anake te ako, heoi anō ka haere ngātahi te ako me te aromatawai i roto i ēnei taiao me te aha, ka āta tautuhia, ka āta tātarihia, ā, ka āta inea.

Mehemea ko Ako te tūāpapa i takea mai ai ngā tikanga ako me ngā tikanga whakaako, e tika tonu kia whakahoropakingia.

HE MEA WHAKAMĀORI MAI I RUKUHIA RARANGAHIA, WH. 29

Kua waihangahia ētahi rauemi me ētahi taputapu hei tautoko i ngā kaiako me ngā ākonga mai i te tau 1 ki te 10 (i tua atu) e pā ana ki te ako me te aromatawai.



MĀ TE POUAKO: Hei whakaako

Te Marautanga o Aotearoa

Ka ārahina, ka tohua te huarahi ako mā ngā ākonga kei ngā kura Māori.

Te Marau ā Kura

Ka whai wāhi ngā kura ki te whakahāngai i Te Marautanga o Aotearoa ki tā rātau e hiahia ai hei painga mō ā rātau ākonga me ō rātau hapori.

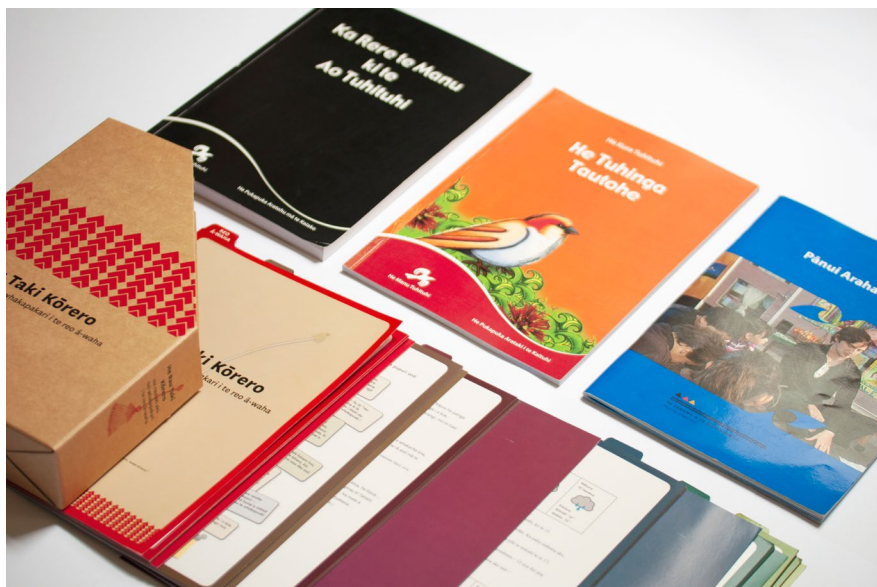
- He tauira anga marautanga ā-kura mai i tētahi kura reorua -
[Te Kōpuku High](#) [Te PDF](#)
- He tauira o tētahi marautanga uruuru mātauranga mai i
[Te Kura Reo Rua o Waikirikiri](#) [Kōnae Ataata](#)
- Ngā rauemi i ahu mai i Te Marautanga o Aotearoa [Te Paetukutuku](#)





MĀ NGĀ POUAKO:

Me pēhea e whakaako ai?



MĀ NGĀ ĀKONGA:

Me pēhea e ako ai?



Ko te aronga o Aromatawai ko te ākongā:

KO TE REO O TE PŪRONGORONGO

Ina tukuna he pūrongo e pā ana ki te ahunga whakamua me nga whakatutukitanga me mātua whakaaro ki:

- te hunga e whai pānga ana (arā ko ngā ākongā, ko ngā kaiako kē, ko te Poari o te Kura, ko ngā whānau, ko ngā iwi, me ngā kāhui ako). Mā wai ēnei pārongo?
- te pūtake. He aha te take e whai hua ai ngā pārongo ki a rātou? Ka ahatia ngā kōrero e rātou?
- te reo. He aha te reo e kawea ana ngā pārongo? He aha ai? He aha ngā tūmomo kupu e whakaahua ana i ngā ākongā hei kaituhi, hei kaipūtaiao, hei ringa toi aha atu, ā, he aha ngā reo hei whakanui i ngā ahunga whakamua me ngā whakatutukitanga?



TE TUKU PŪRONGO KI NGĀ ĀKONGA ME NGĀ WHĀNAU

Te Pūtake

Ko ētahi o ngā take e tuku pūrongo ai ki ngā ākongā me te whānau ko te whakamārama atu i ngā kōrero kia:

- Āta kite te ākongā me tōna whānau e pēhea ana tana ahunga whakamua me tana whakatutukinga paetae
- Mahi tahi te ākongā rāua ko te kaiako ki te tautohu me te whakaraupapa i ngā whāinga ako e tika ana, ā, ki te whakatau me pēhea hoki e whakatutuki ai
- Mahi ngātahi ai te whānau me te kura ki te tautohu he aha ngā momo āwhina hei hāpai i te akoako a te ākongā

Ko te aronga o te tirohanga tuarua, ko te ākongā me te whakaritenga o ngā wheako ki te poi-poi i te tuakiri o te mokopuna hei ākongā. Hei tauira, he whakahau tēnei tirohanga i ngā kaiako kia arotahi atu ki te whakaako i te kaituhi hāunga anō te tuhinga. Waihoki, ka whakawhiti tēnei tirohanga ki ngā tikanga aromatawai e whai wāhi ai te kaiako ki te whakahoki kōrero ki te kaituhi, hāunga rā te tuhinga.

HE MEA WHAKAMĀORI MAI I RUKUHIA RARANGAHIA, WH. 33.



Ko te reo pūrongorongo

Reo Pākehā? Reo Māori?

E tika ana me āta wānanga te hapori me te kura ki te whakatau ko tēhea te reo e hiahiatia ana, tērā pea ka whakaritea he pōti kia kitea ai ngā manakotanga o te hapori.

Ka tuku pūrongo ētahi o ngā kura i te reo Pākehā, kia mārama ai ngā whānau katoa ki ngā kōrero e pā ana ki ā rātou tamariki.

Ka tuku pūrongo ētahi o ngā kura i te reo Māori nā runga i te whakapono o te hapori ki te reo.

Ka tuku pūrongo ētahi o ngā kura i te reo Pākehā, i te reo Māori, i ngā reo e rua rānei, i runga anō i ngā hiahia o te whānau.

Ko ngā kupu me ngā kōrero whakaahuaranga

Me āta waihanganga ngā kōrero e whakaahua ana i te ahunga whakamua me ngā whakatutukitanga paetae a te ākongā kia aronuihia te tangata e ako ana, hāunga anō te ako anake. Me tohu hoki ngā kōrero whakaahuaranga i te āhua o te ahunga whakamua.

He tauira ēnei o te reo pūrongorongo

1) Te reo matatini

Hei kaituhi, i a ia Maia e tuhi ana ka whakaaro ia ki te pūtaka o tana tuhinga me te hunga kaipānui. Nā runga i tērā ka āta whiriwhiriha, ka āta waihangahia e ia ngā kupu me ngā rerenga kōrero kia hāngai ki te pūtaka o te tuhinga me te hunga pānui.

Ka toro hoki ia ki ngā whakaaro me ngā kupu kei ngā tuhinga kua pānuihia, kua rangona hoki e ia, ā, ka tuituia ēnei ki roto i ana tuhinga. I tēnei wā kua tutuki i a Maia ngā whāinga ā-motu e tika ana māna mā te tuhituhi.

2) Pāngarau

I ēnei wāhanga e rua ko ngā whenu matua ko te tau me te taurangi. I te tīmatanga o te tau i whai wāhi a Hone ki te wetewete i ngā paearu o tōna kaupae. Ko te pūtaka o tēnei mahi kia kite ake ia ko ēhea o ngā wāhanga pāngarau tau me ngā rautaki tau kua tutuki kē i a ia. Nā ēnei kitenga ōna i mōhio pū ai ia ki hea tīmata ai. He huhua ngā rautaki kua akona e Hone i ēnei wāhanga e rua e pā ana ki te tāpiri, te tango, te whakarea me te whakawehe hoki, ā, kua whakamahia e ia ē/tētahi o ngā rautaki nei ki te whakautu i ngā rapanga uaua ake. Hei kaipāngarau e tika ana tana whakamahi i te reo pāngarau hei whakamārama i ōna ake whakaaro. I puta mai tana hiakai me tōna hīringa kia whakapakari ake i ōna pūkenga pāngarau nā tōna hiahia kia tutuki i onā whāinga ako. I tēnei wā ko tōna kaupae hei kaipāngarau ko te 7-8, ā, kua eke ki tōna taumata tūturu e ai ki te marautanga ā-motu. Ko ōna whāinga mō te wāhanga tuatoru kia aro ki te hūhūhū (ōrau, hautau me te tau-ā-ira), me te whakapakari ake i tōna mōhio ki ngā tautōpū.

3) Ngā Toi

Ko te huarahi pai kē atu ki a Hēmi hei whakapuaki i a ia hei kaitoi ko te peita. Kua whakamātauhia e ia ētahi āhuatanga o ngā tae, ā, kātahi tonu ka oti i a ia tētahi tauira toi e hāngai ana ki te horopaki o te ngahuru. I taea e ia te whakararu i ngā peita kia hua mai ngā tātiwha e whakaahua mai ana i ngā tae o tēnei wā o te tau. Nāna hoki ngā tūmomo paraehe i whakamahi kia rerekē ngā āhuatanga me ngā taipitopito o tana mahi. He kaihaka a Hēmi, ā, kua tū ia hei kaitātaki ...





TE TUKU PŪRONGO KI TE POARI O TE KURA

Te Pūtake

Me mātua whiwhi ngā poari o ngā kura i ngā pārongo pono kia taea ai e rātou te whakatau rautaki mō ngā whakatutukinga ka takunehia e rātou mā ngā ākongā, me pēhea e tutuki ai me te whakaatu i ō rātou ahunga whakamua.

Kei [konei](#) ngā aratohu e pā ana ki Ngā Whanaketanga Rumaki Māori.

[Te Paetukutuku](#)

Te reo pūrongorongo

Ina tuku pūrongo ana ngā pouārahi ki ngā Poari o ngā Kura tērā pea ka whakamahi tonu i ngā [taumata manawa](#) mai i Ngā Whanaketanga Rumaki Māori, ka waihanga rānei i ā rātou ake taumata.

[Te PDF](#)

Inā hoki i ahu mai Ngā Whanaketanga Rumaki Māori (NWRM) i *Te Marautanga o Aotearoa* me te mea kua whakaturehia ētahi rerekētanga o NWRM e tika ana kia whakarerekēhia ngā kupu reo Pākehā.

Te Marautanga o Aotearoa:

- E eke panuku ana te ākongā i roto i āna mahi ako e ai ki te Marautanga o Aotearoa
- E whakatutuki ana te ākongā i āna mahi ako e ai ki te Marautanga o Aotearoa

- E whanake tonu ana te ākongā ki te whakatutuki i ngā mahi ako e ai ki Te Marautanga o Aotearoa
- Me āta tautoko tēnei ākongā ki te whakatutuki i ngā mahi ako e ai ki Te Marautanga o Aotearoa

Ko te painga o te whakaatu i ngā kōrero paetae ki ngā Poari, kia rite ki tā te raupapa o ngā manawa, ko te āhei ki te whakanui i nga angitutanga i roto i ō tātau horopaki kia kore ai e mātua aro ki ngā tōmuritanga.

[Te PDF](#)
[Te .docx](#)

Wāhanga Ako	Class Level	TERM ONE: Baseline					
		Manawa Toa	Manawa Ora	Manawa Āki	Manawa Taki	Total (#)	Total Manawa Ora & Toa (%)
Kōrero	Year 7	0	0	0	14	14	0.0%
	Year 8	0	5	7	5	17	29.4%
	Year 9	0	8	3	5	16	50.0%
	Year 10	8	3	1	1	13	84.6%
	Total	8	16	11	25	60	40.0%

Te Whakamahinga o Te Waharoa Ararau ā-Kura

He mea waihanga [Te Waharoa Ararau ā Kura](#) mā ngā kaiako, hei pupuri, hei aroturuki i te tupuranga me te whakatutukinga hoki o te ākongā i te reo matatini me te pāngarau.

[Te Paetukutuku](#)

[He Aratohu mā te Pouako / Ngā Whanaketanga Rumaki Māori](#)

[Te Paetukutuku](#)





TE TUKU PŪRONGO KI TE IWI

E kaha ana ngā iwi me ngā kura ki te mahi tahi hei painga mā ngā ākongā. Ko ētahi taurira ko te whakatutuki i ngā wawata o ngā iwi me te rapu huarahi e whai wāhi ai ngā iwi ki ngā kaupapa o ngā kura.

Hei taurira: Waikato-Tainui

Kei te mahere mātauranga 2015–2020, Te Mana Mātauranga o Waikato-Tainui e tohu ana ko te kōrero e whai ake nei ko tētahi o ngā whakaarotau o te rautaki.

Whakaarotau 3: Te Tū Marae

Tangata tū ana ki te marae tau ana

Ko ngā marae te mauri o Waikato-Tainui ka mutu ko te pou tokomanawa o ngā iwi. Ka mātua aro tēnei whakaarotau ki ngā marae hei whare wānanga, hei whare korero, hei tūrangawaewae. Ko te wawata “Kia tupu, kia hua, kia puāwai” (Te Ahunga wh. 6) te herenga tangata ki te marae mai i te 70 ōrau i te tau 2015 ki te 100 ōrau hei te 2050.

Ko te mahere ki raro nei ko tētahi e whakamahia ana e Te Kōpuku High hei huarahi tuku mōhiotanga ki te Tarahiti o Waikato-Tainui Raupatu Lands mō ngā ākongā e whakapapa ana ki Waikato-Tainui.

Ko ngā ‘taumata’ (Taikura, Torokiri ...) e ahu mai ana i te whakataukī ka whāia e te marau ā-kura (te nīkau).

TAU	Taikura	Torokiri	Taitea	Taipua	Toropū
%					
Tuakiri (ā marae)	E tau ana tana tū ki t/ōna marae	E kaha ana ki te toro ki te marae me te tautoko i ngā kaupapa kei te marae	Ka whai wāhi atu ki ngā kaupapa o te marae i ētahi wā	Kua mōhio ki t/ōna marae engari kāore mō te tautoko i ngā kaupapa	Kāore i te mōhio ki t/ōna marae
%					
Tuakiri (ā iwi/hapū)	Kua mōhio ki t/ōna iwi/hapū, ā, kua mōhio tōna iwi/hapū ki a ia	Kua mōhio ki t/ōna iwi/hapū, ā, e mōhio ana hoki ki ētahi kōrero ake mō t/ōna iwi/hapū	Ka taea te taki i tōna pepeha, ā, kei te mōhio ki ētahi kōrero mō ngā tohuwhenua o tōna pepeha	Ka whakaingoa i tōna iwi/hapū engari kāore i te tino mōhio ki ngā kōrero	Kāore i te mōhio ki t/ōna iwi/hapū

Ko ngā rauemi hei aromatawai i ngā wawata o te iwi/mana whenua

[Te Arotake i te Mana Motuhake](#)

[Te PDF](#)

[Cross-sector forum toolkit — Toro atu ki te Wāhanga 5. Ko te mahi tahi ā-whānau, ā-kaituku mahi, ā-iwi me te hapori tae atu ki ngā rangapū ā-iwi](#)

[Tirohia te PDF](#)





AROMATAWAI ME TE TUKU PŪRONGO MŌ NGĀ KĀHUI AKO

He mea matua te toro atu, te tuari me te tātari i nga raraunga aromatawai e hāngai ana ki ngā kura kei ngā Kāhui Ako, ā, me tuku pūrongo e whakamārama ana me pēhea e tutuki ai nga paetae me nga wero kua tautohua.

Kei te hononga nei: [Pūtauaki ki Rangitaiki Kāhui Ako](#) tētahi taurira aromatawai mō tētahi Kāhui Ako e uru mai ai nga kura Māori me ngā kura Auraki

[Te Paetukutuku](#)

Kei te ara ake ngā Kāhui Ako Māori nō reira ko ngā kōrero e pā ana ki ō rātou taki paetae me ngā tikanga aromatawai, toro atu ki [Education Counts](#) a tōna wā.

[Te Paetukutuku](#)

He rauemi mo ngā Kāhui Ako

[Cross sector forum toolkit](#) — Toro atu ki te wāhanga 4: He Whitiki Ara Umanga me te huarahi mātauranga mō ia ākongā: Te Rāngai Kāhui Ako ā Iwi

[Tirohia te PDF](#)

3

Ko te aronga o Aromatawai ko te āheinga me te māiatanga o te kaiako:

KIA WHAKAMAHI I NGĀ TAUNAKITANGA HUHUA

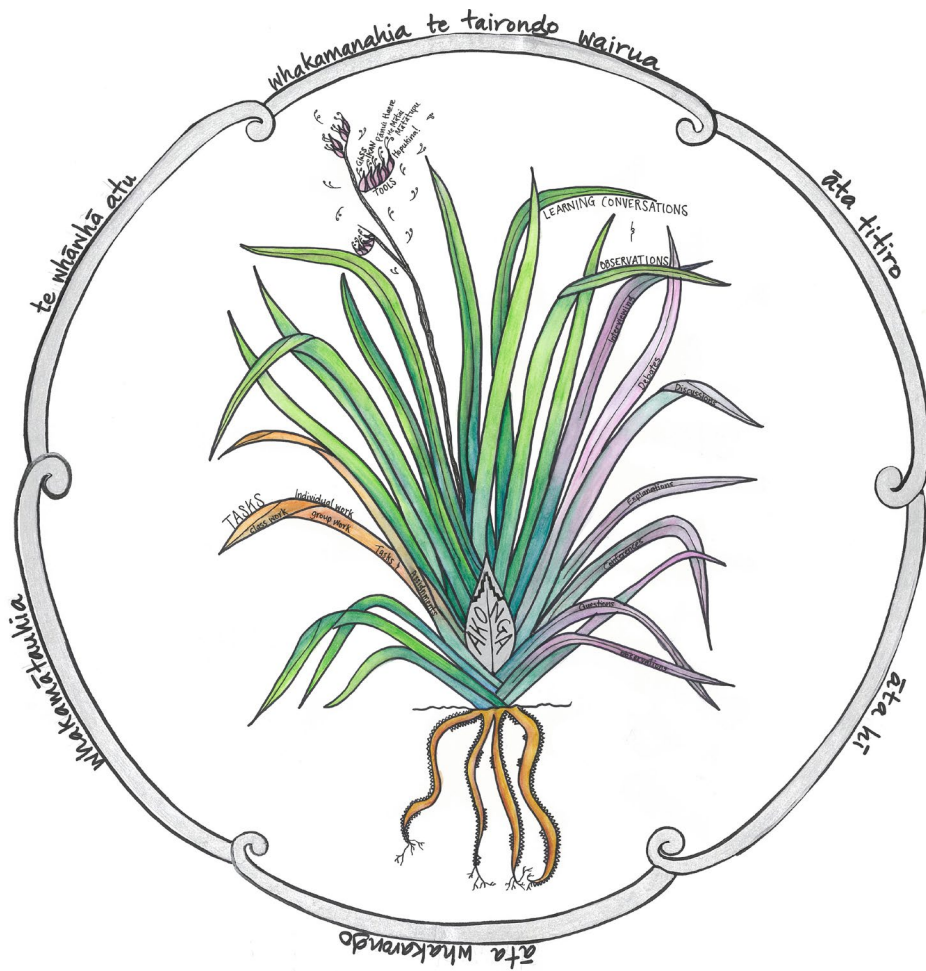
Me whakamahi te kaiako i te huhua o ngā āhuetanga aromatawai hei whakaatu i tētahi whakamāramatanga e tautohu ana i ngā wāhanga kua whanakehia, i ngā wāhanga kia arohia, ā, e whakaahua ana hoki i te kaunekehanga ahurei mō ngā ākongā.

Mā ngā wheako ako me ngā pāhekohekotanga i waenga i te kaiako ki te ākongā, i te ākongā ki te ākongā, i te kaiako ki te whānau, i te ākongā ki te whānau e puta ai ngā taunakitanga huhua hei tohu i ngā akoranga, hei whakaahua hoki i te ahunga whakamua me ngā whakatutukitanga o te ākongā.

Kei te hoahoa o raro iho nei e kitea ana kua tīkina te harakeke hei whakaatu i te hononga i waenga i te ako me te aromatawai kia mahara tātou pūtakea mai ai te aromatawai i te ako ([Tirohia te Tirohanga 1](#)). Ka kitea i te whakaahua nei ko ako te iho/rito, ko aromatawai ngā rau awhirito, ngā rau kaumātua me ngā kōrari. Mā te whakawhiti kōrero, mā te mātakitaki, mā ngā ngohe me ngā kaikoha huhua (te whānau, te ākongā, kaiako kē, ...) e āhei ai te aromatawai. Ko ngā pāhekotanga me ngā ākongā o ia rā e hāpaitia ana e ngā aromatawai ōkawa (ka tohua tēnei i te pikitia o te kōrari o te harakeke i tana puāwaitanga i tētahi wāhanga noa o te tau). Mā te tairongo e tūhono ai te ako me te aromatawai.

[Tirohanga 1](#)





He aha tēnei mea te tairongo?

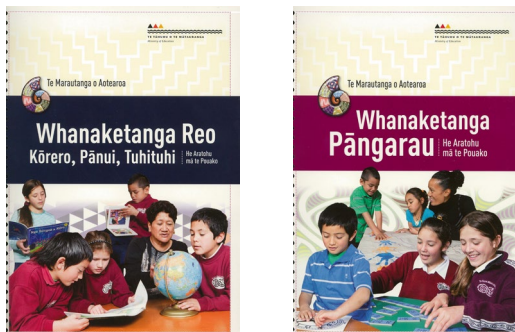
Ko tairongo ko te rongo ā-taringa, ā-whatu, ā-tinga, ā-arero, ā-ihu, ā-wairua hoki. Ahakoa e hāngai ana ki te tinana ngā rongo tōmua e rima ko te rongo tuaono tērā ka pupū mai i a koe, arā ko te rongo ā-wairua...Ki te whakaritea he tikanga whakaako e whakamana ana i ngā tairongo hei huarahi ako, me pakari tonu ngā pūkenga o ngā kaiako ki te mātakitaki, ki te whakarongo, ā, ki te whakawhiti kōrero hoki, waihoki, kia kaha tōna hononga ki ngā ākonga, tērā pea mā te rongo ā-wairua, ā, tēra anō pea, mā te whai takenga.

HE MEA WHAKAMĀORI MAI I RUKUHIA RARANGAHIA, WH. 16

... he torotoronga te aromatawai i ngā pārongo huhua e pā ana ki ngā ākonga, ā, mā te whakamahinga i ngā tairongo hei huarahi pono e whaimana ai ngā kitenga. Ko ngā pāhekohekotanga o ia rā, ko ngā rauemi me ngā tikanga aromatawai ētahi o ngā huarahi e pakari ai te kaiako i a ia anō i roto i ngā āhuatanga katoa o te whakaako me te ako.

HE MEA WHAKAMĀORI MAI I RUKUHIA RARANGAHIA, WH. 35

Ngā Whanaketanga Rumaki Māori



Ko tā ngā Ngā Whanaketanga Rumaki Māori he āta tohu i te tipu o te mātauranga me ngā pūkenga o te ākongā i te pānui, tuhituhi, pāngarau me te kōrero kia ngākaunui ai te ākongā ki ngā kaupapa katoa o te marau, ā, e tōtika ai tāna ahunga whakamua. Ko ngā taurira o Ngā Whanaketanga Rumaki Māori he āwhina i te kaiako ki te whakatau aronga.

Ehara i te mea me whai tonu ngā kura i Ngā Whanaketanga Rumaki Māori mō ngā tau 1-8 hei aromatawai i te ahunga whakamua me te whakatutukitanga o ngā ākongā e pā ana ki te kōrero, tuhituhi me te pānui, me te pāngarau, engari kei ngā kura te tikanga me pēhea rātau e aromatawai ai, he aha ngā kōrero ka kohia, ka tātarihia hoki, ka mutu, me pēhea hoki e whakamahi ai i aua kōrero. Kei ngā [National Administration Guidelines \(NAGs\)](#) hou ngā whakamāramatanga.

Kua whakahoungia ngā NAG hei whakaatu i ngā herenga ā-kura e pā ana ki te tuku pūrongo mō te ahunga whakamua me te whakatutukitanga o ngā ākongā e ai ki te marautanga whānui. Hei tā ngā NAG hou me kohi, me tātari, me tuku pūrongo e whakaatu ana i te kōhanga o ngā pānui aromatawai. Ko te whakamāramatanga o tēnei ko te “toro atu ki ngā momo taunakitanga huhua hei aromatawai i te ahunga whakamua me te whakatutukitanga o ngā ākongā, ā, ka kitea te whānuitanga me te hōhonutanga o ngā akoranga o te ākongā i te marautanga whānui” (NAG 1).

Kei te whakaaroarohia tonuhia te āhuatanga o te tuku pūrongo ki ngā mātua me ngā whānau mō “Te Marautanga o Aotearoa”, nō reira kei ngā kura te tikanga me pēhea tā rātau whakatinana i ngā

wawata me ngā tumanako o te hapori ki roto i ā rātau marautanga, huarahi aromatawai me ngā kōrero e whakamārama ana i te ahunga whakamua me ngā whakatutukinga o te ākongā.

[Ngā Whanaketanga Rumaki Māori / He Aratohu mā te Pouako](#)

[Hononga ipurangi](#)

Ngā rauemi aromatawai

He huhua ngā rauemi aromatawai ōkawa e whakaatu ana i ngā puna taunakitanga hei whakamārama i te ahunga whakamua me ngā whakatutukinga paetae o te ākongā.

Hei taurira, ina whakamahia ai ngā rauemi pēnei i te Mātai Mātātupu, ka āhei ki te āta ine i te ahunga whakamua o te ākongā mā te whakamātau anō i a ia, me te aha e kitea ai ngā nekehanga e hua mai ana i ngā akoranga tautoko.

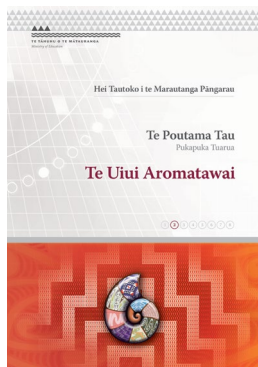
[Te Paetukutuku](#)



HE MĀTAI MĀTĀTUPU				Ngā Tikanga o te Tuhi Kōrero		Te Tāutu Reta		Te Whakamātautau Kupu		Te Tuhi Kupu		Whakarongo, Tuhia ngā Tangi o roto i ngā Kupu		Taumata Panui Ngā Kete Kōrero
Ingoa o te tamaiti	Tama / Kōtiro	Tau / Marama	Ngā rā	24	Kaute hauwhā	33	Kaute hauwhā	15	Kaute hauwhā	-	Kaute hauwhā	41	Kaute hauwhā	
Areka	Tama	6.3	3/5/17	9	1	15	1	2	1	5	1	3	1	KHa
		6.9	6/11/17	13	3	30	2	12	3	24	3	37	3	KKa/e

Ina whakamahia Te Uiui Aromatawai mō pāngarau, ka inea te ahunga whakamua o ngā ākonga mai i te neke i tētahi kaupae, taumata rānei ki tētahi anō.

Te Uiui Aromatawai o Te Poutama Tau



Rā Uiui (#1) 3/3/17

Rā Uiui (#2) 4/3/18

Ngā Kaupae o ngā Ākonga Katoa

Ingoa	Tāpiri / Tango	Whakarea / Whakawehe	Pānga Riterite	Tatau Whakamua	Tatau Whakamuri	Whakaingoa Tohutau	Tau Hautanga	Uara Tū / Whakarōpū	Meka Matua
Teia Year 4	4	4	4	4	4	5	4	4	5
Teia Year 5	5	5	5	5	5	6	5	5	5



He Uiui Aromatawai Tōmua i te Pāngarau: (Junior Assessment Mathematics)

Mō te ākongā e whakawhiti ana mai i Taumata 1 ki Taumata 2.

Ka taea kia rua ngā wā i te tau, hei whakataurite rānei i tetahi tau ki te tau o muri atu.

Ingoa	Tau i te kura	Rā uiui	Ngā Rautaki Tāpiri	Ngā Rautaki Whakarea	Te Whakaingoa Tohutau	Te Tatau Whakamua	Te Tatau Whakamuri	Ngā Hautanga	Te Uara Tū me te Whakarōpū	Ngā Meka Matua	Te Taurangi	Te Āhuahanga	Te ine i te roa
Hemi	1	4/7/17	2-3	2-3	4	2-3	1	0-1	0-1	0-1	2-3	2-3	2-3
Hemi	2	5/7/18	4	4	4	4	4	4	4	4	4	4	4

Kei te [MM Assessment Resource Maps](#) ngā rauemi hāpai i te aromatawai.

[Te Paetukutuku](#)

Kei te [Progress and reporting: Best practice yearly overview chart](#) ngā kōrero ārahi e pā ana ki te whakahaere i te aromatawai.

[Te PDF](#)

Kei te [TMOA Alignment chart](#) ngā kōrero e pā ana ki te whakahāngaitanga o te reo matatini me te pāngarau.

[Te PDF](#)

Kei Te Reo Matatini: Te KKM o Te Ara Hou: Oral language assessment: Kaiaka Reo tētahi taurira e pā ana ki tētahi rauemi aromatawai motuhake.

[Kōnae Ataata](#)

Kei te wāhanga [Support Resources](#) ki Te Waharoa Ararau ā Kura ngā kōrero e pā ana ki Te Whakatau Aronga.

[Te Paetukutuku](#)

He taurira tēnei taputapu mō — Pānui Kōrero

PĀNUI HAERE

Ingoa (tuwhāki) _____ Mā whānau _____ Mā tau _____ Mā te reo _____ Mā te _____ Mā te _____

Ingoa (whānau) _____ Kaitiaki _____ Rā _____ Mā te _____ Mā te _____ Mā te _____

Kōwhiri (whānau) _____ Mā te _____ Mā te _____ Mā te _____ Mā te _____ Mā te _____

Kōwhiri	Pānui	Whānau	Whānau	Whānau
1	✓	✓	✓	✓
2	✓	✓	✓	✓
3	✓	✓	✓	✓
4	✓	✓	✓	✓
5	✓	✓	✓	✓
6	✓	✓	✓	✓
7	✓	✓	✓	✓

Kōwhiri (whānau) _____ Mā te _____ Mā te _____ Mā te _____ Mā te _____ Mā te _____



4

Ko te aronga o Aromatawai ko ngā āhuatanga me ngā pūmanawa tuku iho o te kaiako:

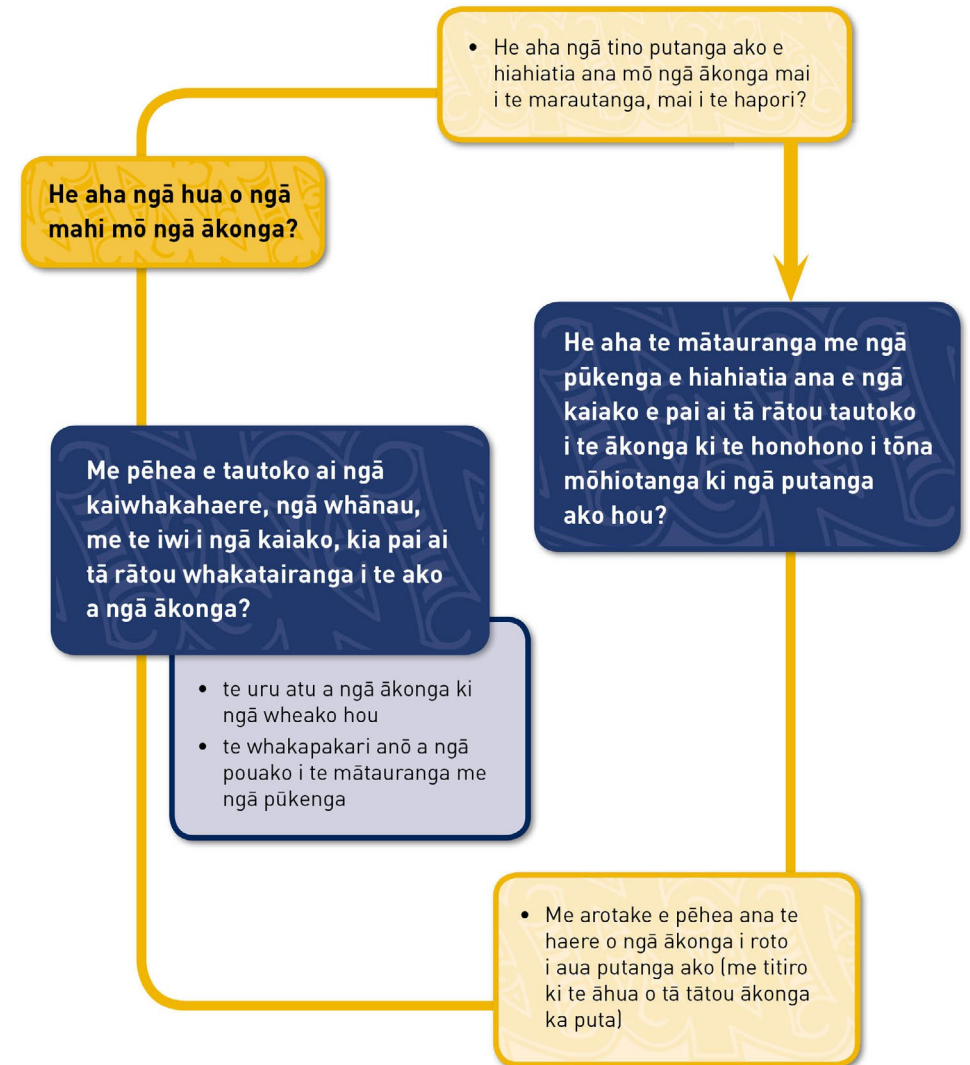
KO TE AROTAKE ME TE PAKIREHUA

He mea mutunga-kore te whakarerekētanga i te āhuatanga o tēnei mea te whakaako whai hua i runga anō i ngā mātauranga hou me ngā rangahau e haere tonu ana. Me mōhio ngā kaiako ki ō rātou ake āhuatanga, ki ō rātou pūmanawa hoki kia pai ai te whakauruuru i ngā 'tikanga me ngā huarahi whakaako hou' ki roto i ngā mahi.

Ko tā te aromatawai me tika tonu ngā whakataunga a ngā kaiako e pā ana ki ngā pārongo paetae kua kohia e rātou, hei whakarite i ngā akoranga whaihua mā ngā ākongā.

Ko te arotake, te aromātai me ngā rauemi pakirehua ētahi o ngā tikanga aromatawai e hāpai ana i tēnei tukanga i te mea ko te aronga o te tukanga nei ko ngā pāpātanga o ngā whakapono me ngā mahi o te kaiako (ki te ākongā). Ka whai take te pakirehua me te arotake mēnā e tuwhera ana te hinengaro o te kaiako ki te whakarerekē i ētahi āhuatanga mai i ngā kitenga o ngā tātaritanga.

Te Hurihanga Whakaako Pakirehua me te Waihanga Mātauranga



He mea tango tēnei hoahoa i wh.16, *Te Marautanga o Aotearoa*

Kei te papatau te taurira o tētahi pakirehua mō te ākongā e whai ake nei, nā Te Kōpuku High, (Kirikiriroa).

Te PDF
Te .docx

Kia mōhio: Kei te aromātaingia, ā, kei te arotakengia tonuhia ēnei ariā me ēnei tukanga kia piki ake te ako mā ngā ākongā.

Ko ētahi āhuatanga matua e whakapakari ai i te taha whakangaio o te kaiako ko te whai whakaaro, ko te whakaaro whānui, ā, ko te āta whakaaroaro ki te hua o ana mahi.

HE MEA WHAKAMĀORI MAI I RUKUHIA RARANGAHIA, WH. 37

Tūāhua Pakirehua	Ngā Kōrero
MAHI 1: E MĀRAMA ANA TE PAKIREHUA ME TE KOHI TAUNAKITANGA <i>Ka mutu hei te wiki 3, Wāhanga 2</i>	
1a. Ko t/ēhea ākongā te aronga o taku pakirehua? Ko te aha tōna pepeha? He aha ana pāinga?	
1b. He aha ngā taunakitanga (ākongā mai, ākongā kē mai, whānau mai, hoa kaiako mai) i whai painga ki ahau ki te tautuhii tēnei kōwhiringa?	
1c. Ki ōku whakaaro me whakarerekē ahau i te aha hei tautoko i te ākongā ki te neke whakamua?	
1d. He aha ētahi akoranga ngaio tanga e tika ana māku hei tautoko i te ākongā?	
1e. Me pēhea au e mōhio ai i whai hua aku akoranga hei āwhina i te ākongā ki te neke whakamua?	
1f. He aha ngā whakahokinga kōrero a te whānau nā ngā whakawhitinga kōrero mō taku pakirehua?	
WĀHANGA 2: KO NGĀ PURAPURA WHAKAMĀRAMA <i>Ka mutu hei te Wiki 6, Wāhanga 2</i>	
2a. He aha ōku māramatanga hou/tirohanga rerekē mō te ākongā ināianei?	
2b. He aha, ko wai rānei i whai wāhi ai ki aua whakamāramatanga?	
2c. He aha aku mahi ināianei?	
2d. Whakaritea he wā mātirotiro, kia arotakengia koe e tētahi hoamahi	Tirohanga Te Arotake
WĀHANGA 3: TE AROTAKE: TE WHAKAAROARO KI TAKU PAKIREHUA <i>Ka mutu hei te Wiki 6, Wāhanga 3</i>	
3a. He aha aku akoranga i whakarerekēhia e au i runga anō i taku mārama pū ki t/ēnei ākongā?	
3b. He aha ngā whakaawetanga o ēnei whakarerekētanga i pā mai ki ahau? Ki te ākongā? Ki te whānau? Pēhea au i mōhio ai?	



5

He mea tūturu te Aromatawai:

KO TE WHAKATUTUKI I NGĀ WAWATA Ā-MOTU ME NGĀ WAWATA Ā-HAPORI

Kei ngā **Marau ā-kura** ngā horopaki e whai hā ai Te Marautanga o Aotearoa kia tika, kia hāngai ngā akoranga ki ngā ākonga, ([tirohia te Tirohanga 1: I takea mai ai a Aromatawai i a Ako](#)).

He tauira Marau ā Kura

- He tauira o tētahi marau ā-kura mā te kura reo rua – [Te Kōpuku High](#)
- He tauira o tētahi marautanga haeretahi mā te kura reo rua – [Te Kura Reo Rua o Waikirikiri](#)

Ngā rauemi hei waihanga i te Marau ā Kura

- [Rapua Te Ara Tika](#)

Te aromatawai i ngā rauemi Marau ā-Kura

- [Te Arotake i Te Marau ā Kura](#)
- He Patapātai: Te Marau ā-Kura

Ko ngā Mahere ā-Tau me ngā Tangongi Tātaringa

Me mātua tuku ngā kura i tētahi Mahere ā-Tau me tētahi Tangongi Tātaringa ia tau i mua tonu i te 1 o Poutūterangi.

[Tirohanga 1](#)

[Te PDF](#)

[Kōnae Ataata](#)

[Te Paetukutuku](#)

[Te Paetukutuku](#)

Ina whakatau whāinga ngā kura mō te tau e heke mai nei me te arotake i te ahunga whakamua, te aromātai hoki i ngā whakatutukitanga, ka tau ngā ritenga o te kura kia taea ai e ngā ākonga katoa te eke panuku, te eke tangaroa i te ao mātauranga.

[Te Whakamahere me te Pūrongo a te kura](#)

[Te Paetukutuku](#)

Ko te [tauira](#) e whai ake nei, nā Kia Ata Mai Educational Trust i homai.

[Tuku ihotia te PDF](#)

Kia mōhio: Kei te aromātaingia, ā, kei te arotakengia tonuhia ēnei ariā me ēnei tukanga kia piki ake te ako mā ngā ākonga.

Ngā kōrero	Kei te rangirua	Kaha whakahē	Kāore i te whakaae	Āe tautoko	Tautoko mārika
1. Ka whakaatuhia e tā tātou marau ā-kura tō tātou pūmanawatanga ki te hapū, te iwi, te mana whenua me te hapori	<input type="radio"/>	<input type="radio"/>	<input type="radio"/>	<input type="radio"/>	<input type="radio"/>
2. Ka whakaatuhia e tā tātou marau ā-kura, tō tātou tuakiri tūhāhā me tō tātou ake āhuetanga	<input type="radio"/>	<input type="radio"/>	<input type="radio"/>	<input type="radio"/>	<input type="radio"/>
3. Ka ārahina ngā whakaakoranga me ngā wheako ako e tā tātou marau ā-kura	<input type="radio"/>	<input type="radio"/>	<input type="radio"/>	<input type="radio"/>	<input type="radio"/>
4. Ka āta tohua ngā mahere ako me ngā kōwae ako e tā tātou marau ā-kura	<input type="radio"/>	<input type="radio"/>	<input type="radio"/>	<input type="radio"/>	<input type="radio"/>
5. E āhei ana ngā pouārahi ki te whakaahua me te whakamārama i ngā kai o roto i tā tātou marau ā-kura	<input type="radio"/>	<input type="radio"/>	<input type="radio"/>	<input type="radio"/>	<input type="radio"/>
6. E āhei ana ngā kaiako ki te whakaahua me te whakamārama i ngā kai o roto i tā tātou marau ā-kura	<input type="radio"/>	<input type="radio"/>	<input type="radio"/>	<input type="radio"/>	<input type="radio"/>
7. E āhei ana ngā ākonga ki te whakamārama i ā rātou e ako ana (kia hāngai ki tā tātou marau ā-kura)	<input type="radio"/>	<input type="radio"/>	<input type="radio"/>	<input type="radio"/>	<input type="radio"/>
8. E āhei ana ngā whānau ki te kōrero mō te āhuetanga motuhake o tā tātou kura (kia hāngai ki te marau ā-kura)	<input type="radio"/>	<input type="radio"/>	<input type="radio"/>	<input type="radio"/>	<input type="radio"/>





Ki te Māori te ako ka tūturu te taiao ako me te aha ka whakatairangahia te ako. Ko te puna mātauranga Māori ake o ngā kura ka ahu mai i ngā hapori, kei reira te tūturutanga o Ako.

HE MEA WHAKAMĀORI MAI I RUKUHIA RARANGAHIA, WH. 39

E rua ngā pūtake o te aromatawai kei ngā kura Māori:

1. I roto i ngā kura ka whāia te aromatawai e whakatau ana he pēhea rawa te ako a te ākongā
2. I roto i ngā hapori, ka whāia te aromatawai e whakatau ana e pēhea te tautoko a te hapori ngā wawata o te hapori

HE MEA WHAKAMĀORI MAI I RUKUHIA RARANGAHIA, WH. 18

6

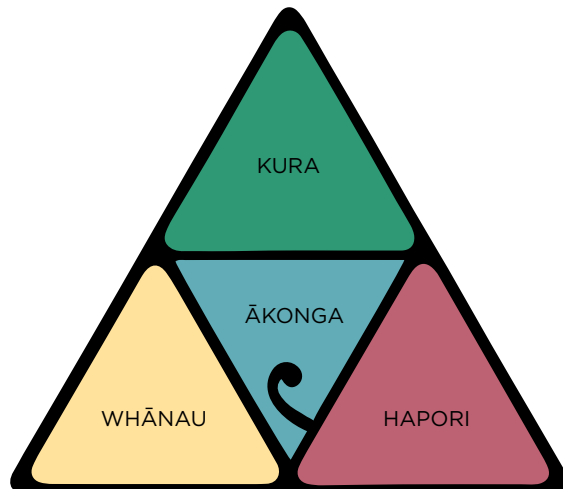


Ko Aromatawai te māngai reo o te tamaiti, te whānau, te hapū me te hapori:

KO TE AROMATAWAI ME TE WHAKAMŌHIO ATU I NGĀ WAWATA O TE HAPORI

Ina whai wāhi te katoa ki te ahunga whakamua me ngā whakatutukitanga o te ākongā e kounga ake ai ngā kōrero mō te ākongā.

Kia mōhio ai: Ko te tikanga o te hapori i tēnei hoahoa ko te hapori whānui, arā ko te marae, te hapū me te iwi.



TE ĀHUATANGA O TE ĀKONGA

Kei Te Marautanga o Aotearoa te whakarāpopototanga o ngā āhuatanga tino whai tikanga o te ākongā ka puta i ngā kura reo Māori. E whakaatu ana Te Marautanga o Aotearoa i te āhua o ā tātāu ākongā i runga ano i te tirohanga ngātahi o te whānau, te hapū, te iwi me te kura mō ngā akoranga a te ākongā. Ko ngā putanga iho tōmua ko te panekiretanga o te mātauranga, ko te tū Māori, ko ngā pūkenga whai oranga maha me ngā kōwhiringa umanga whānui.

Ko te whanaketanga kei ngā kura Māori

Te Kura o Hiruharama “I āta wānanga ā-rōpū mātau, ā, ka ōhia manomano me te whakawhiti kōrero. He pēhea te āhua o te ākongā e puta ake ai i Hiruhārama? He aha ngā momo pūkenga ka hiahiatia e rātou? He aha ngā pūmanawa kei a rātau? He aha ngā mōhiotanga kei a rātau? He aha te momo tangata ka hua ake?” *Tumuaki*

Kōnae Ataata

Te Āhuatanga o te Ākongā: Te Pā o Rākaihautu

Te Paetukutuku

Ko te whanaketanga o te āhuatanga o te ākongā kei tētahi kura reorua

E kōrero ana ngā kura o Maungatapu me Merivale mō tō rātau Āhuatanga o te Ākongā.

Te Paetukutuku

Te Hono i te Āhua o a tātāu Ākongā

Te Paetukutuku



Ko ngā kōrero e whai ake nei nā te kura o Fairhaven, he huarahi e kōhi pārongo ai mō ngā ākongā mā te marau ā-kura mai i ngā ākongā, kaiako me te whānau.

[Tuku ihotia te PDF](#)

[Tuku ihotia te .docx](#)

Ko Toitōi Manawa te ingoa whānui mō ngā akomanga rumaki kei tēnei kura.

Kia maumahara: Kei te aromātaingia, ā, kei te arotakengia tonuhia ēnei ariā me ēnei tukanga kia piki ake te ako mā ngā ākongā.

Ingoa: _____

Waahanga: _____

Toitōi Manawa 2018

	Whai Whakaaro (Be Respectful)	Whai Mana (Be Responsible)	Whai Kaha (Be Resilient)
Ākongā	<i>I show respect (whai whakaaro when) I ...</i> Ka whai whakaaro ahau ina ...	<i>I show responsibility (whai mana) when I ...</i> Ka whakatinana ahau i te whai mana ina ...	<i>I show resilience (Whai Kaha) when I ...</i> Ka whai kaha ahau ina ...
Kaiako	<i>I see him/her showing Whai Whakaaro at kura when ...</i> Ka kite ahau i a ia e whai whakaaro ana i te kura ina ...	<i>I see them showing Whai Mana at kura when ...</i> Ka kite ahau i te whakatinanatanga o te whai mana i te kura ina ...	<i>I see him/her showing Whai Kaha at kura when ...</i> Ka kite ahau i a ia e whai kaha ana i te kura ina ...
Whānau	<i>We see him/her showing Whai Whakaaro at home when ...</i> Ka kite mātou i a ia e whai whakaaro ana i te kāinga ina ...	<i>We see him/her showing Whai Mana at home when ...</i> Ka kite mātou i te whakatinanatanga o te whai mana i te kāinga ina ...	<i>We see him/her showing Whai Kaha at home when ...</i> Ka kite i a ia e whai kaha ana i te kāinga ina ...



Ingoa: _____

Waahanga: _____

Toitōi Manawa 2018

[Tuku ihotia te PDF](#)
[Tuku ihotia te .docx](#)

	Whakatinana ngā moemoeā (Dream)	Whakamau ngā pūmanawa (Strive)	Whakahihiko ngā Tipuranga (Achieve)
Ākonga	<i>I showed this when ...</i> I whakatinana ahau i tēnei i ...	<i>I showed this when ...</i> I whakatinana ahau i tēnei i ...	<i>I showed this when ...</i> I whakatinana ahau i tēnei i ...
Kaiako	<i>I saw him/her showing this when ...</i> I kite ahau i te whakatinanatanga o tēnei i ...	<i>I saw him/her showing this when ...</i> I kite ahau i te whakatinanatanga o tēnei i ...	<i>I see him/her showing this when ...</i> Ka kite ahau i te whakatinanatanga o tēnei i ...
Whānau	<i>We see him/her showing this when ...</i> I kite mātou i te whakatinanatanga o tēnei i ...	<i>We see him/her showing this when ...</i> Ka kite mātou i te whakatinanatanga o tēnei i ...	<i>We see him/her showing this when ...</i> Ka kite mātou i te whakatinanatanga o tēnei i ...



Nā Te Kura Kaupapa Māori o Bernard Fergusson tēnei tauria i homai.

Kia mōhio: Kei te aromātaingia, ā, kei te arotakengia tonuhia ēnei ariā me ēnei tukanga kia piki ake te ako mā ngā ākongā.

Me pēhea e whaihua ai ngā hui pou-ākongā

Ka tū ngā hui mātua pou-ākongā o waenga i te tau hei te (TUHIA NGĀ RĀ) mai i te 3.00–6.00 i te ahiahi. (ka whakawāteahia ngā ākongā hei te 2 pm). He tūāpapa ngā hui nei e whai wāhi ai ngā ākongā ki te whakapuaki i ō rātou mōhiotanga kātahi tonu nei ka ako ki ō rātou mātua, i te wā e rite ana rātou, ā, i roto hoki i ā rātou ake kupu.

Ngā kaupapa matua o te hui:

Ka whakahaerehia te hui e te ākongā heoi anō ka noho mai te kaiako ki te akomanga ki te tautoko i te ākongā, tērā pea ka whakahau i te ākongā ki te whakaputa whakaaro, ki te whakamārama rānei i tētahi kōrero;

- E āhei ana te tamaiti ki te whakamahi i ngā hangarau matihiko, i ētahi atu taputapu rānei ki te whakaatu i tāna i ako ai.
- Ko ngā mōhiotanga ka whakapuakina ko ngā akoranga kātahi tonu nei ia ka ako, ehara i te whakarāpopototanga o ngā aromatawai nō nā noa nei.
- Kotahi anake te kaupapa o te hui, arā ko ngā akoranga o te ākongā, mēnā ko ngā whanonga tētahi kaupapa me whakarite tētahi hui anō ka whakatauhia e ngā mātua me te kura.

Raupapatanga hui:

- Ka pōwhiritia ngā mātua e te ākongā;
- Ka whakawhiti kōrero, ka whakaatu rānei te ākongā i te huhua o ngā tauria o āna mahi mai i ngā marautanga rerekē (tērā pea kei te pakitara ngā mahi, kei te rorohiko, aha noa, aha noa atu);

- Ka whakamihia ngā mātua e te ākongā i tā rāua tae ā-tinana mai, ā, i tō rāua ngākaunui ki āna mahi;
- I te mutunga o te hui ka whai wā te kaiako ki te whakamārama i te ahunga whakamua a te ākongā ki ngā mātua.

Ka whai wāhi ngā mātua i ngā hui pou-ākongā ki te:

- Āta whakaatu i te manawareka ki ngā āhuatanga akoako a tō tamaiti;
- Mārama ki ngā akoranga kua kawea, kua mahia hoki e tō tamaiti;
- Mōhio ake ki ngā āhuatanga o te ako me te whakaako e whakahaerehia ana i te akomanga o tō tamaiti.

Ko ētahi pātai tērā pea ka tukuna e ngā mātua (ka tuku noa mēnā ka raruraru tō tamaiti i a ia e kōrero ana mō āna akoranga):

Tau 1-2

- He aha tāu i ako ai e pā ana ki te ... (pāngarau, pānui pukapuka, te taiao)
- He aha tētahi mea tino whakahirahira ki a koe? He aha ai?
- Tēnā koa, whakaatuhia mai tētahi kaupapa tino uaua ki a koe? Tēnā koa, pānuitia mai tētahi o ō kōrero?

Tau 3-8

- He aha te mea hiranga ki a koe e pā ana ki tēnei mahi?
- He aha ngā uauatanga ki a koe e pā ana ki tēnei mahi?
- Whakaatuhia mai i pēhea tāu i whakatika ai?
- Kōrerohia mai ngā āhuatanga tino pai rawa atu ki a koe mō tēnei mahi? Me pēhea taku tautoko i a koe i ō akoako?

Tumuaki



7

He mea whakaatu te Aromatawai i te pitomata me ngā pūmanawa o ngā ākonga:

KEI TUA ATU I TE TOHU MĀTAURANGA

He ākonga anō kei muri i āna tohu mātauranga. Kei ngā ākonga, kei ō rātou whānau tonu ētahi atu mōhiotanga hei tāpiri atu ki te āhuetanga o te ākonga, mā te ākonga, mō te ākonga.

Ko tā te aromatawai he hāpai i te pitomata me ngā pūmanawa o te ākonga, ā, he whakanui i ō rātou matareka, ō rātou tūmanako me ō rātou iho pūmanawa.

HE MEA WHAKAMĀORI MAI I RUKUHIA RARANGAHIA, WH. 43

Hei taurira: Ka whai reo ākonga te pūrongo

I te kura o Te Kōpuku High (Kirikiriroa) mō ngā ākonga mai i te Tau 7-10, ka whakautu ngā ākonga i ngā pātai i raro iho nei, ā, ka whakauruhia ā rātou whakautu ki roto i ā rātou pūrongo ā-tā e tukuna ana ki ngā whānau, i waenga, i te mutunga hoki o te tau. Ka tāngia ngā pūrongo hukihuki kātahi ka hoatu ki ngā ākonga I MUA i te tuku atu ki ngā whānau. Ka ākina ngā ākonga ki te āta pānui i ā rātou pūrongo hukihuki me te whakwhitiwhiti kōrero ki ō rātou kaiako ina hiahia ana ki te whakarerekē i etahi kōrero.

Kia mōhio: Kei te aromātaingia, ā, kei te arotakengia tonuhia ēnei ariā me ēnei tukanga kia piki ake te ako mā ngā ākonga.

NGĀ WAIARO/ATTITUDES		I ngā wā katoa	I te nuinga o te wā	I ētahi wā	Kāore anō
Te Urupuia Ka whai whakaaro ki ētahi atu kia tū rangatira ai rātau	Ki tā te pouako				
	Ki tā te ākonga				
Te Kāhiwi Ka tiaki i ōna ake rawa me āna ake rauemi	Ki tā te pouako				
	Ki tā te ākonga				
Ngā Rau Ka noho haepapa ia ki āna ake whakataunga	Ki tā te pouako				
	Ki tā te ākonga				
Ngā Rau Ka ūpoko pakaru ia ki tāna i whai ai hei whakakaha ake i a ia anō	Ki tā te pouako				
	Ki tā te ākonga				
Ngā Hua Ka mātua whai hua ia i ngā akoranga kia tū rangatira ai ia	Ki tā te pouako				
	Ki tā te ākonga				



Ki ō whakaaro ko tō ekenga whakahirahira i tēnei tau ko te aha?

Ko te whai hoa hou.

Ko taku ekenga whakahirahira ko te mahi tunu keke. I whakapau kaha ahau ki te mahi me te ako pūkenga hou. I ako au kia tika tonu te ine kei mūhore te keke. I ako hoki au me pēhea te whakauru i ngā ngongo wai hei whakakaha ake i te keke e rua ngā paparanga kia kore ai e hinga. Heoi ko tētahi mahi nui mā mātau ko te whakatikatika i te kīhini. Ko te mahi tino pai ki ahau i oti i a au taku keke hīrere M&M.

Kei te kaha ake taku pānui me taku tuhituhi.

Whakaarohia tētahi o ngā ihotea i whaiwāhi ai ki tō rangatiratanga. Whakamāramatia mai ngā huapai i puta.

He pito kōrero: He akoranga tautoko te Ihotea ka whakatūria mai i te 8.30–10 i te ata. He akoranga ēnei e arotahi atu ana ki ētahi akoranga mai i te marautanga whānui tonu.

Ko te hanga 'kapo moemoeā' i te taha o Whaea Kimi. He kaupapa hihiri, ā, i ako hoki au i ētahi tikanga e pā ana ki te harakeke. Kua mōhio anō ahau ki te āta haere otirā kia kaua e whāwhai ki te whakaoti i ngā mahi.

I tino whai hua au i te ihotea pāngarau i te mea nā Whaea au i ako ki ētahi rautaki kia kakama ake taku mōhio ki ngā whakarea.

Ko te mau rākau i te mea nā ēnei mahi kua kaha ake taku aro ki aku mahi.

Whakaarohia tētahi 'Kaupapa Ihiihi' i whaiwāhi ai ki tō rangatiratanga? Whakamāramahia mai ngā huapai i puta?

He pito kōrero: Tū ai ngā Kaupapa Ihiihi ia ahiahi Rāmere.

Nā runga i te hanga i ētahi 'āhuatanga wai' i mōhio ai ahau he kāmura tino hira rawa atu ahau.

Nā ngā akoranga tū rangatira hākinakina ahau i tautoko i waho, i roto hoki o te kura, inarā ko te whakapakari i tōku tinana. Kua mōhio au ināianeī, ki te pakari ake tōku tinana, ka pai kē atu taku tākarō rīki.

Nā te kēmu Rorohanga ngā wāhanga e moe tonu ana i tōku roro i whakaohoho. Nā runga i tēnei āhuatanga i mataara ake tōku hinengaro, ā, i pakaru tōku ūpoko ki te whakaaroaro ki ngā wāhanga whaimuri mai. Ka poi poi ake tōku auahatanga kia puāwai mai tōku hinengaro auaha.



Kei raro iho nei he tauira o tētahi hīti matapaki, ā, ko tētahi wāhanga noa tēnei o te tukanga whakauru mā ngā mokopuna e hiahia ana kia kuraina ki Te Kōpuku High (Kirikiriroa).

Kia mōhio: Kei te aromātaingia, ā, kei te arotakengia tonuhia ēnei ariā me ēnei tukanga kia piki ake te ako mā ngā ākonga

TE KŌPUKU HIGH
Te Taha Hinengaro
 Mental capacity, thinking, processing thoughts, feelings, emotions, capacity to communicate, think & feel, kare ā roto, pouwhenua, poutāwha, Tainuku, Tairangi, Tainui

Ko te reo pakohā te reo matua ki te kaitiaki

Kōrevo māoni ana ōna tuākana

Haere ai ia ki te kōhanga reo ā,

Rame ki a ia te pānui pukapuka me te tahi kōrevo

Kua whāngaitia ē tōna mānā. I kite ia i tōna pāpā i ngā hararei rama (kua whāngaitia rama)

E kaha ana ia ki te tiaki i a ia ano

Ko ia te pōtiki:

x2 ōna tuākana / x1 tōna tungane - (kei te kura tonu)
kua waea i te kura/kaitiaki hoki

Te Taha Whaanau

Pūmanawa, whakakōtahi, whakaako, whakarangaitia, pāharakeke, kōpuku, how they see themselves in their own whaanau, whakapapa/pepeha, whaanau structure, relationships with others, manaakitanga, past, present & future, whaanauangata to belong, care & share

He mahi ngātahi te ako, nā te ākonga, mā te ākonga, mō te ākonga.

HE MEA WHAKAMĀORI MAI I RUKUHIA RARANGAHIA, WH. 43

Te Taha Tinana

Physical, sport, health, inter/intra, confidence, body language, te reo ā tinana, appearance, routines, self-managing, physical growth & development

E kaha ako ana mā te tāwhekeweke mā te tirohiko hoki

He kaihoe naka ana

He psi te hākinakina ki a ia. He toa ia ki te kīmu nītipōro

Mokopuna:
 Nō whea koe?
 Share your story...
 Ko Tainui te waka
 Ko Waikato te inī
 Ko Waikato te awa
 Ko Taupiri te maunga
 Ko Ngāti Mahanga te hapū

What do we already know?

- 1 tipu ake ki Tamaki Makaurau
- Nō te kura o Hato Hōpcha
- Ira wahine
- Tau 7

Tainui Registration #: Kore Rau

Newsletter: **EMAIL/PRINTED**
 Circle one please

Kaha ia ki te whai hoa hou

Kotiro hūmanī, ngākau māhaki

Nō te hāhi katonika te whānau. Haere ai ki te whare karakia i ētahi wā

He mōkai kararehe āna. E aroha ana ia ki te taiao

Me tuku atu he pepa rēhita

Te Taha Wairua

Individual āhua a ngakau, tairongo, spiritual correction/communication, wai/cleansing, spiritual beliefs, poutuarongo, soul, inner core and essence/hō, karakia - kai o te wairua, spiritual

He mea whakamōhio te Aromatawai i te whakamahere me ngā take tautāwhi:

ME WHAKATAU KI RUNGA I TE MŌHIOTANGA

Kei te pae kura, he mea tautoko ngā pārongo kohinga Aromatawai i ngā pouārahi o te kura, ngā pou whakahaere me te Poari o te kura kia āhei ai rātou ki te:

- Whakatau i ngā whāinga rautaki me te aroturuki i tā rātau ahunga whakamua hei whakatutuki i ēnei whāinga (Ko te Mahere ā-Tau, Ko te Tangongi Tātaringa)
- Tautuhi i ngā matea akoranga ngaiotanga mā ngā kaiako
- Tautuhi i ngā kaupapa e tika ana kia whiwhi rauemi

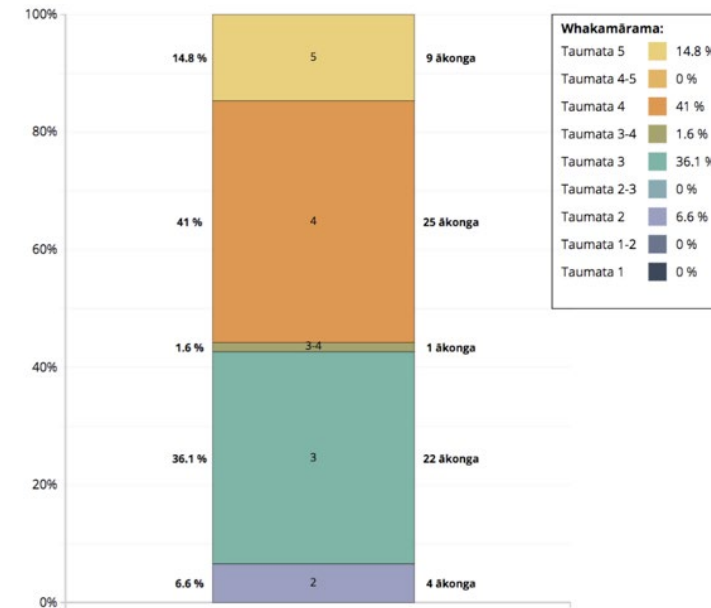
Ka whakaatuhia e te kauwhata e whai ake nei mai i Te Waharoa Ararau i te hora o ngā ākonga i tētahi kura kei ngā taumata o te marautanga.

Tiro whānui

Ngā tātaringa Kōrero Q2 (Paenga-whāwhā - Piripi) 2018

He tirohanga whānui mō Kōrero

Kura: Rōpū: Taumata tau: Ngā tau katoa Wāhanga: Q2 (Paenga-whāwhā - Piripi) 2018



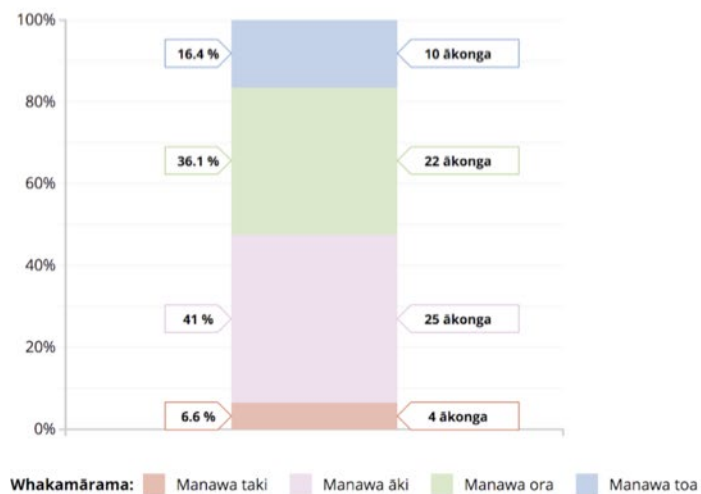
Ka whakaatuhia e te kauwhata e whai ake nei mai i Te Waharoa Ararau i te hora o ngā ākongā i tētahi kura kei ngā taumata Whanaketanga Rumaki Māori.

Tiro whānui

Ngā tātaranga Kōrero Q2 (Paenga-whāwhā - Piripi) 2018

He tirohanga whānui mō Kōrero Kōrero

Kura: Rōpū: Taumata tau: Ngā tau katoa Wāhanga: Q2 (Paenga-whāwhā - Piripi) 2018



Ka whakamahia e tētahi kura (Te Kōpuku High ki Kirikiriroa) te ripanga excel e whai ake nei hei huarahi anō ki te tātari i ngā raraunga paetae, kia whakahoki kōrero ki ngā kaiako me ngā Poari o te Kura.

[Te PDF Hou](#)
[Te .docx Hou](#)

Kei te kite noa i ngā raraunga kōrero.

Wāhanga Ako	Year Level	TERM ONE: Baseline						TERM TWO					
		Manawa Toa	Manawa Ora	Manawa Āki	Manawa Taki	Total (#)	Total Manawa Ora & Toa (%)	Manawa Toa	Manawa Ora	Manawa Āki	Manawa Taki	Total (#)	Total Manawa Ora & Toa (%)
Kōrero	Year 7	0	0	0	14	14	0.0%	0	7	5	2	14	50.0%
	Year 8	0	5	7	5	17	29.4%	5	4	8	0	17	52.9%
	Year 9	0	8	3	5	16	50.0%	2	10	4	1	17	70.6%
	Year 10	8	3	1	1	13	84.6%	4	6	2	1	13	76.9%
	Total	8	16	11	25	60	40.0%	11	27	19	4	61	62.3%

Wāhanga Ako	Results by Gender	TERM ONE: Baseline result						TERM TWO					
		Manawa Toa	Manawa Ora	Manawa Āki	Manawa Taki	Total (#)	Total Manawa Ora & Toa (%)	Manawa Toa	Manawa Ora	Manawa Āki	Manawa Taki	Total (#)	Total Manawa Ora & Toa (%)
Kōrero	Female	5	7	5	4	21	57.1%	6	7	9	0	22	59.1%
	Male	3	9	7	20	39	30.8%	4	15	16	4	39	48.7%
	Total	8	16	12	24	60	40.0%	10	22	25	61	61	52.5%

COMMENTS ABOUT KŌRERO ACHIEVEMENT

Year 7: The distribution of mokopuna across Manawa levels has changed substantially since term 1. Given the nature of these shifts, many of these new mokopuna may not have provided their best effort in kōrero for an accurate assessment to be made at term 1 baseline.

Year 8: All of the positive shifts have occurred for mokopuna at Manawa Taki (where there are now no mokopuna at this achievement level) and 1 x mokopuna previously at Manawa Āki, is now Manawa Ora.

Year 9: There has been a shift in the numbers of ākonga at Manawa Taki to Manawa Āki (x 4), from Manawa Āki to Manawa Ora, (x 1) and from Manawa Ora to Manawa Toa (x 2).

Year 10: Negative shifts occurred for 4 mokopuna whose new achievement levels are now Manawa Ora and 1 mokopuna whose new achievement level is now Manawa Āki. This can be attributed in part to high levels of absence from kura.

Gender: Females performed better than males.

APPROACHES AND STRATEGIES THAT LED TO ACCELERATED ACHIEVEMENT

- More deliberate acts of teaching in tuhituhi and kōrero and linking these two strands together more explicitly
- Use of mixed ability and ability grouping for different instructional foci
- Interchanging kaiako across groupings for exposure to different dialects and teaching styles
- Use of puna reo rautaki from He Rau Taki Kōrero resource to support pedagogical practice in kōrero



Kei te pae whānau ā-kaiako me ngā pae akomanga, ka āhei ki te whakamahi i ngā pārongo kohinga aromatawai hei arotake i ngā hua o ngā hōtaka ako mā ngā tamariki katoa, ā, ko te whakamahere i ngā akoranga whakamua, ina rā mā ngā ākonga kua āta tohua.

Kei Te Waharoa Ararau ngā āhuratanga e taea ai e ngā kaiako te wehewehe, te waihanga hoki i ngā pūrongo e pā ana ki ngā ākonga i ngā taumata ā-tau, i ngā akomanga, i te ākonga takitahi hoki.

Ngā aronga whakatau mō Kōrero



Pou ▾

Ingoa tuatahi ▾	Ingoa whānau	Te rā o te aronga whakatau	Te wā i roto i te kura	Tau ▾	Taumata e ai ki te wā i roto i te:		Tama/Kōtiro ▾	Year level ▾	Ngā āhuratanga motuhake
					Kura ▲	Rumaki ▾			
Makoha	Maru	28 Jun 2018	6y 8m (80m)	2	Manawa taki	N/A	M	7	
Alex	Mapihi	28 Jun 2018	6y 9m (81m)	2	Manawa taki	Manawa ora	M	7	
Tiki	Okohoro	28 Jun 2018	9y 1m (109m)	3	Manawa taki	N/A	M	10	SS ME MH
Tristan	Paku	28 Jun 2018	8y 8m (104m)	3	Manawa taki	N/A	M	9	
Te Waiora	Pepelo	28 Jun 2018	7y 8m (92m)	3	Manawa āki	N/A	M	8	
Te Maitaranui	Rukuhia	28 Jun 2018	8y 4m (100m)	3	Manawa āki	N/A	M	9	
Tumokai	Rukuhia	28 Jun 2018	9y 10m (118m)	4	Manawa āki	N/A	F	10	
Parearau	Tonga	28 Jun 2018	8y 11m (107m)	4	Manawa āki	N/A	M	9	



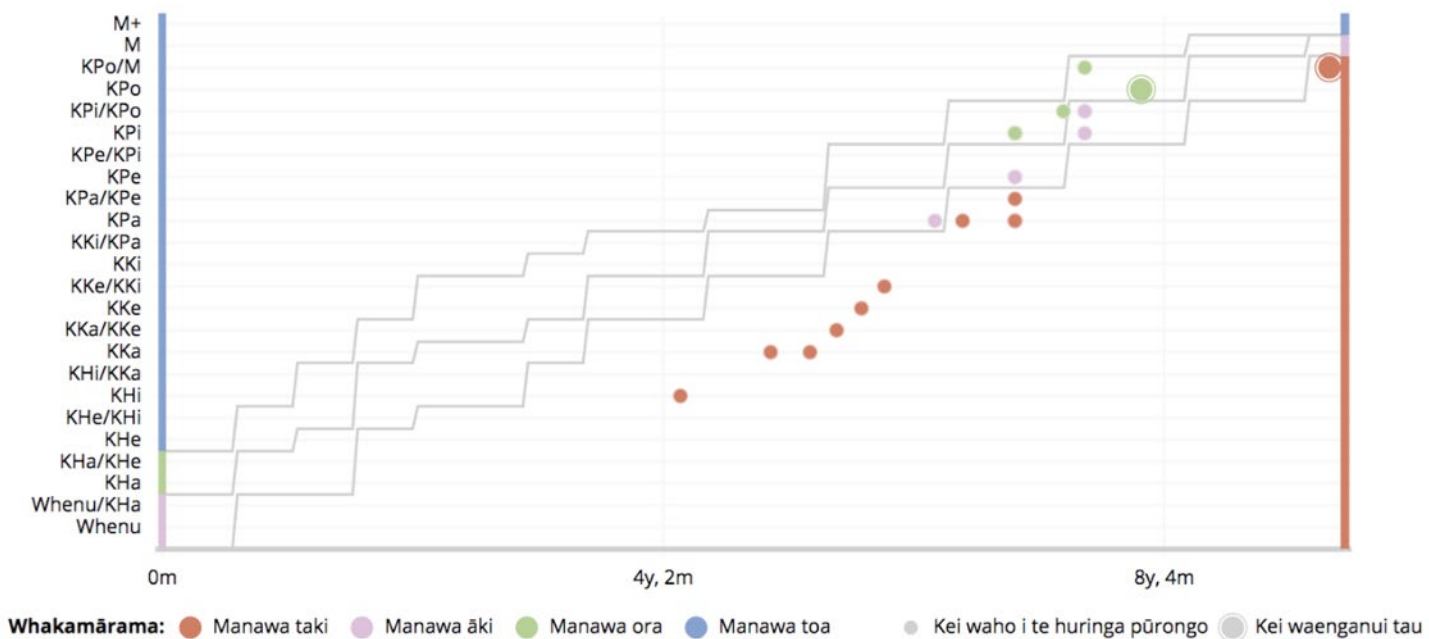
Hei whakaatu tēnei kauwhata i te nekenga whakamua me ngā whakatutukitanga a tētahi tamaiti i te roanga o te wā. I ētahi o ngā pae eke i āta hāpaingia tēnei ākonga.

Te whanaketanga o tēnei whenu Te aronga whakatau tata nei

Ngā tātaranga Pānui 0y 0m - 9y 10m

Te pūrongo whanaketanga Pānui

Kura: Taumata tau : 10 Taumata rumaki : Level 1 Te wā i roto i te kura : 9y 9m (117m)



Kei te pae Kāhui Ako, ka whai pānga atu ngā pārongo kohinga aromatawai ki ngā paetae me nga wero kua tautohua e te Kāhui Ako, ā, i te roanga o te wā ka tohu ngā kohinga kōrero mēnā e whakatutuki haere ana te kāhui i ngā wero.

[Kāhui Ako Tools](#)

[Tirohia te PDF](#)

[Te Waharoa Ararau ā Kura](#)

[Te Paetukutuku](#)

He tauira Kāhui Ako (Tainui Kura Kaahui Ako)

Ko te rauemi nei ko tētahi e waihangatia tonutia ana heoi kua whakauruhia hei tauira e whakaatu ai i te āheitanga o ngā taki paetae ki te hāpai i ētahi āhuetanga anō o te ako a te ākongā. (I tēnei tauira ko te manawapono me te manawaroa).

Kia mōhio mai: Kei te aromātaingia, ā, kei te arotakengia tonuhia ēnei ariā me ēnei tukanga kia piki ake te ako mā ngā ākongā.

KIA MANAWAPONO (He tauira)

	5	4	3	2	1
Te Whakatutuki Whāinga	E tino whakapono ana ahau mā te whakapau kaha ka tutuki i ahau ōku whāinga. E mōhio pū ana ahau ki ngā momo āwhina, ki ngā momo tautoko hei painga māku, ā, ka whāia e au ki te hiahiatia.	E whakapono ana ahau mā te whakapau kaha ka tutuki i ahau ōku whāinga. E āhua mōhio ana ahau ki ngā momo āwhina, ki ngā momo tautoko hei painga māku, ā, ka whai āwhina ki te hiahiatia.	E whakapono ana ahau ka tutuki i ahau ōku whāinga, ā, kua rite ahau ki te whakapau kaha engari me whai āwhina ahau kia whakatutukihia.	Kāore au mō te whakarite whāinga i te mea he pae tawhiti e kore e taea e au.	Kāore au mō te whakarite whāinga i te mea kāore au e mōhio me pēhea rā.



KIA MANAWAROA

Whāia te pae tawhiti kia tata

	5	4	3	2	1
Kia mauria te taki	Ka whakamātau ahau i te kaupapa ahakoa he mahi whakatara, ahakoa he mahi taumaha, ā, ka ū tonu kia tae au ki te pae angitu.	Ka whakamātau ahau i te kaupapa ahakoa he mahi whakatara, ahakoa he mahi taumaha, ā, i ētahi wā ka ū kia tae ki te pae angitu.	Ka whakamātau ahau i ngā kaupapa i te nuinga o te wā ahakoa he mahi whakatara, ahakoa he mahi taumaha engari ki te kore au e whai hua ka kore au e mahi, ā, nā wai ka hinga.	Ka whakamātau ahau i ngā kaupapa i ētahi wā ahakoa he mahi whakatara, ahakoa he mahi taumaha engari ki te kore au e whai hua kāore e roa ka hinga.	Kia uaua, kia taumaha rawa ngā mahi ako ka hinga mārika ahau.

Aromatawai ... ko tētahi taha o te Aromatawai ko te tautuhi i ngā whakaarotau matua, ā, mā wai hoki? Ki te tika ngā tukanga kohi raraunga me āta whai whakaaro te kaiako ki ēnei āhuatanga arā 'pēhea, he aha, ināhea/āhea, i hea me te he aha ai'.

HE MEA WHAKAMĀORI MAI I RUKUHIA RARANGAHIA, WH. 45



He Mihi

Ngā kaituhi: Ko Cath Rau rātou ko Rauhina Cooper, ko Hinekahukura Te Kanawa, ko Ameria Rua.
Kia Ata Mai Educational Trust.

Ngā kōrero me ngā whakaahua © Te Karauna kia whakamahia i roto i ngā tānga kōrero o Te Tāhuhu o te Mātauranga o Aotearoa, hāunga ko ēnei i raro nei:

Ngā pikitia me ngā atahanga

Wh.8 *Tairongo illustration* nā Cath Rau, Kia Ata Mai Educational Trust
Wh.15 *Harakeke* @ Hana Pomare
Wh.1–2, 16 *School outline icons* nā VoodooDot/Shutterstock Images
Wh.3, 5–7 *Simple Set of Document Related Vector Line Icons* nā Davooda/Shutterstock Images

Ngā tuhinga me ngā ripanga

Wh.1, 14 *Example for a dual medium setting* nā Te Kōpuku High
Wh.6 *Identity and Marae connectedness rubric* nā Te Kōpuku High
Wh.7 *Education Strategy (Mana Mātauranga)* nā Waikato-Tainui,
Te Arotake i te Mana Motuhake nā Ngā Kura ā Iwi
Wh.10 *He Mātai Mātātupu* nā Cath Rau, Kia Ata Mai Educational Trust
Wh.10–11 *Te Uiu Aromatawai o te Poutama Tau* nā Leeana Herewini
Wh.13 *He Pakirehua mō te Ākongā* nā Te Kōpuku High
Wh.14 *Te Arotake i Te Marau ā Kura* nā Kia Ata Mai Educational Trust
Wh.16 *Graduate Profile for Te Pā o Rākaihaitu* nā Te Pā o Rākaihaitu
Wh.17–18 *Te Hono I te Āhua o a tātau Ākongā* nā Fairhaven School
Wh.19 *Student-led parent interviews* nā Te Kura Kaupapa Māori o Bernard Fergusson
Wh.20 *Ākongā contributions to written reports* nā Te Kōpuku High
Wh.22 *Whānau conference sheet* nā Te Kōpuku High
Wh.23–27 *Achievement graphs* nā Te Kōpuku High
Wh.28–29 *Self-efficacy and Perseverance rubrics* nā Tainui Kura Kaahui Ako

ISBN 978-1-77669-490-7

Kua noho manatā tēnei rauemi. Atu i ngā take pēnei i ngā akoranga whaiaro, te rangahau, te arotake me te arohaehae mahi e whakaaetia ana i raro i te ture Copyright Act, kore rawa e tukuna kia tāia anō tētahi wāhanga o ngā kōrero nei, ahakoa te huarahi tā. Me mātua tonu whakaae ki te Te Tāhuhu o Te Mātauranga.

Tuku ihotia mai i [Te Kete Ipurangi](#).



Te Kāwanatanga o Aotearoa



